

FibRSol – Fiber Media Converter

Model: FSMC—35LBi-20 / FSMC-53LBi-20

Highlights:

- ✓ SM BiDi
- ✓ 10/100M
- ✓ TX-1310nm / RX-1550
- ✓ SC, 20km
- ✓ External AC 220V
- ✓ Bi-Directional



Product Overview:

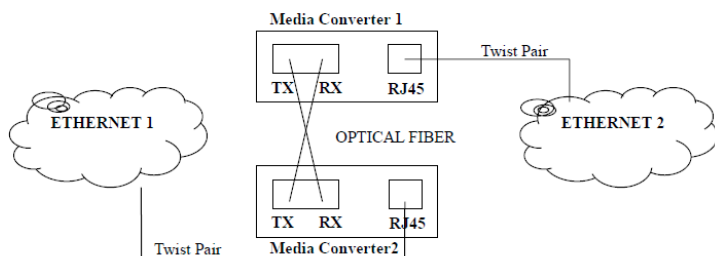
FibRSol FSMC-35LBi-20/FSMC-53LBi-20 10/100M Fiber Media Converter translates the signal from a twist-pair 10/100Base-TX cable to 100Base-FX fiber optic cable, extends data transmission distance from 100m via copper cables to 20km on Single fiber optic

Features:

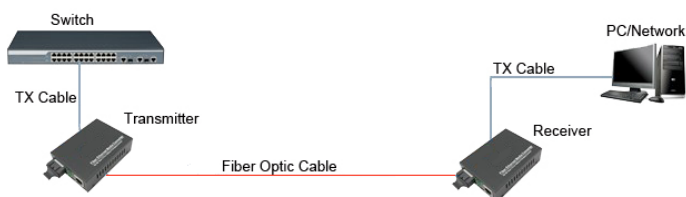
- In conformity to IEEE802.3 10base-T,
- IEEE802.3u 100 base-TX/FX,
- IEEE802.1a, IEEE802.1PQoS,
- IEEE802.1d Spanning Tree.
- 10/100Mbps auto-sensed
- 10/100Mbps store-and-forward
- 100Mbps cut-through transmission
- MDI/MDI-X Auto Negotiation Supports
- 2U 19" System Chassis, holds up to 14pcs standalone type media converter or 16pcs card based media converter
- Hot Pluggable & Wall-Mountable
- Stable performance more than 50 thousands hours with fault-free
- Unique IC solution applied Supports 10/100Mbps and 10/100/1000M
- full/half duplex / Auto-negotiations / easy upgrades
- Supports VLAN / VoIP / QoS
- Support flow control and reduce broadcast packets
- Supporting STP to form a redundant network
- Extremely low power consumption, low heat,
- Transmission Stable performance more than 50 thousands hours with fault-free
- In conformity with safety code of FCC, CE and RoHS.

Application:

- Network Communication
- FTTH / FTTB / FTTx
- ISP Backhaul Networking
- Extend your Ethernet connection up to 0~120km away using fiber optics
- Creates an economical Ethernet-fiber/copper-fiber link for connecting remote sub-networks to larger fiber optic networks/backbones
- Converts Ethernet to fiber, fiber to copper/Ethernet, ensuring optimum network scalability for connecting two
- or more Ethernet network nodes (e.g. connecting two buildings on the same campus)
- Designed to provide high-speed bandwidth for demanding large scale work groups that require expansion of
- Gigabit Ethernet Network



For Networking:



Software Spec

Standard:	IEEE802.3 10Base-T Ethernet, IEEE802.3u 100Base-TX/FX Fast Ethernet
Data Rate:	Copper: 10/100M; Fiber: 155M
Flow control:	Full duplex: flow control; Half duplex: back pressure
Cooper Port:	No.s of Copper Port: 1 Connector: RJ45 Connector Distance: 100m
Fiber Port:	No.s of Fiber Port: 1 Connector: SC as default Wavelength: SMF: 1310nm/1550nm Distance: 20Km
LED indicators:	PWR (power supply); FL/A (optical link/action) FDX (FX full duplex), TL/A (twisted pairs link/action) 100 (100M transmission rate of twisted pairs), FX (100M transmission rate of optical fiber)

Power supply: Working power: DC5V 1A
AC Power Supply: 100V~ AC240V to 5V1A
Or DC Power Supply: -36~-72V to 5V1A
External / Internal Power Supply Optional

Power consumption: <3W

Environment: Operating temperature : -10~55°C
Storage Temperature: -40~85°C
Relative Humidity: 5% to 95% non-condensing

Dimensions: External: 94mmx70mm*26mm
Internal: 140mmx110mmx30mm

Gross Weight: External : 0.4kg Internal: 0.5kg

Ordering Information:

Model	Description
FSMC-35Lbi-20	Media converter, SM, BiDi, 10/100M, TX-1310nm/RX1550nm, SC, 20km, External AC 220V
FSMC-53Lbi-20	Media converter, SM, BiDi, 10/100M, TX-1550nm/RX1310nm, SC, 20km, External AC 220V