

## FibRSol – Fiber Media Converter

Model: FSMC—35MBi-20 / FSMC-53MBi-20

### Highlights:

- ✓ SM BiDi
- ✓ 10/100/1000M
- ✓ TX-10/100/1000Base to 1000 Base-FX
- ✓ SC, 20km
- ✓ External AC 220V
- ✓ Bi-Directional
- ✓ Single Fiber



### Product Overview:

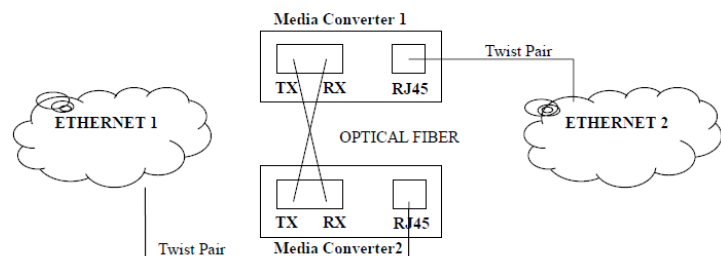
**FibRSol FSMC-35MBi-20/FSMC-53mBi-20** 10/100/1000M Fiber Media Converter translates the signal from a twist-pair 10/100/1000Base-TX cable to 1000Base-FX fiber optic cable, extends data transmission distance from 100m via copper cables to 20km by Single fiber optic

### Features:

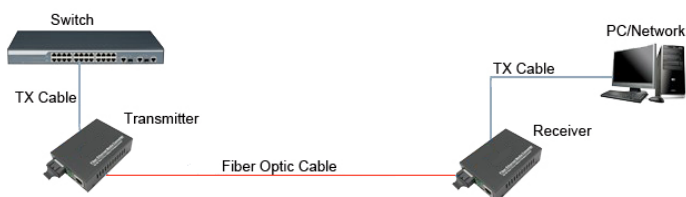
- In conformity to IEEE802.3 10base-T,
- IEEE802.3u 100 base-TX/FX,
- IEEE802.1a, IEEE802.1PQOS,
- IEEE802.1d Spanning Tree.
- 10/100/1000Mbps auto-sensed
- 10/100/1000Mbps store-and-forward
- 1000Mbps cut-through transmission
- MDI/MDI-X Auto Negotiation Supports
- 2U 19" System Chassis, holds up to 14pcs standalone type media converter or 16pcs card based media converter
- Hot Pluggable & Wall-Mountable
- Stable performance more than 50 thousands hours with fault-free
- Unique IC solution applied Supports 10/100Mbps and 10/100/1000M
- full/half duplex / Auto-negotiations / easy upgrades
- Supports VLAN / VoIP / QoS
- Support flow control and reduce broadcast packets
- Supporting STP to form a redundant network
- Extremely low power consumption, low heat,
- Transmission Stable performance more than 50 thousands hours with fault-free
- In conformity with safety code of FCC, CE and RoHS.

## Application:

- Network Communication
- FTTH / FTTB / FTTx
- ISP Backhaul Networking
- Extend your Ethernet connection up to 0~120km away using fiber optics
- Creates an economical Ethernet-fiber/copper-fiber link for connecting remote sub-networks to larger fiber optic networks/backbones
- Converts Ethernet to fiber, fiber to copper/Ethernet, ensuring optimum network scalability for connecting two
- or more Ethernet network nodes (e.g. connecting two buildings on the same campus)
- Designed to provide high-speed bandwidth for demanding large scale work groups that require expansion of
- Gigabit Ethernet Network



## For Networking:



## Software Spec

<b>Standard:</b>	IEEE802.3 10Base-T Ethernet, IEEE802.3u 100Base-TX/FX Fast Ethernet IEEE802.3u 1000Base-TX/FX Fast Ethernet
<b>Data Rate:</b>	<b>Copper:</b> 10/100/1000M; <b>Fiber:</b> 1.25G
<b>Flow control:</b>	<b>Full duplex:</b> flow control; <b>Half duplex:</b> back pressure
<b>Cooper Port:</b>	<b>No.s of Copper Port:</b> 1 <b>Connector:</b> RJ45 Connector <b>Distance:</b> 100m
<b>Fiber Port:</b>	<b>No.s of Fiber Port:</b> 1 <b>Connector:</b> SC as default <b>Wavelength: SMF:</b> 1310nm/1550nm <b>Distance:</b> 20Km
<b>LED indicators:</b>	<b>PWR</b> (power supply); <b>FL/A</b> (optical link/action) <b>FDX</b> (FX full duplex), <b>TL/A</b> (twisted pairs link/action) <b>100</b> (100M transmission rate of twisted pairs), <b>FX</b> (100M transmission rate of optical fiber)
<b>Power supply:</b>	<b>Working power:</b> DC5V 1A <b>AC Power Supply:</b> 100V~ AC240V to 5V1A <b>Or DC Power Supply:</b> -36~-72V to 5V1A External / Internal Power Supply Optional
<b>Power consumption:</b>	<3W
<b>Environment:</b>	<b>Operating temperature :</b> -10~55°C <b>Storage Temperature:</b> -40~85°C <b>Relative Humidity:</b> 5% to 95% non-condensing
<b>Dimensions:</b>	<b>External:</b> 94mmx70mm*26mm <b>Internal:</b> 140mmx110mmx30mm
<b>Gross Weight:</b>	<b>External :</b> 0.4kg <b>Internal:</b> 0.5kg

## Ordering Information:

Model	Description
FSMC-35MBi-20	Media converter, SM, BiDi, 10/100/1000M, TX-1310nm/RX1550nm, SC, 20km, External AC 220V
FSMC-53MBi-20	Media converter, SM, BiDi, 10/100/1000M, TX-1550nm/RX1310nm, SC, 20km, External AC 220V