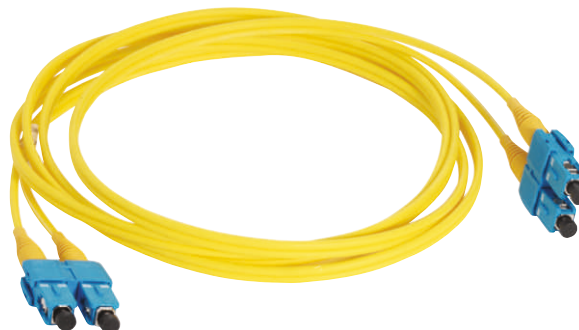


Optical Fibre Patch Cords

FEATURES AND SPECIFICATIONS

Features and Benefits

FibRSol Optical Fibre Patch Cords are LS0H jacketed as standard. PVC and Plenum rated cables are available at request. FibRSol patch cords offer factory-controlled performance in a variety of connector, FibRSol has taken specific attention to the end-face geometry and fibre core alignment to ensure reliability and optimised performance



- 100% Factory Tested – Guaranteed performance
- LS0H Jacket Standard – Reduces toxic/corrosive gasses emitted during combustion. Plenum and PVC also available
- Multiple Formats available - Available in Simplex, Duplex, Singlemode, Multi Mode and a variety of connector options

Cable Colour		
Colour Matrix		
OS1/OS2	9/125	Yellow
OM1	62.5/125	Orange
OM2	50/125	Grey
OM3	50/125 10Gig	Aqua
OM4	50/125 40Gig	Aqua

Multimode Cable						
	Core OD (µm)	Cladding OD (µm)	Attenuation @ 850nm (dB/km)	Attenuation @ 1300nm (dB/km)	Min Bandwidth @ 850nm (Mhz/km)	Min Bandwidth @ 1300nm (Mhz/km)
OM1	62.5	125 ± 1	3.5	1.0	200	500
OM2	50	125 ± 1	3.5	1.5	500	500
OM3	50	125 ± 1	3.5	1.5	2000 a 1500 b	500
OM4	50	125 ± 1	3.5	1.5	4700 - DMD 1500 - OFL	500

Singlemode Cable							
	Cladding OD (µm)	Mode Field Dia	Max. Attenuation	Cut Off Wave Length	Maximum Dispersion @ 1310nm	Maximum Dispersion @ 1550nm	Zero Disp Wave
OS1	125 ± 0.7	9.0 µ ± 0.4 µ @1310nm	0.4dB/km @ 1310nm to 1625nm	1260nm max.	3.2 psec/nm-km	18 psec/nm-km	1300-1324nm
OS2	125 ± 0.7	9.2 µ ± 0.4 µ @1310nm 10.4 µ 0.5µ @ 550nm	0.33-0.35dB/KM @ 1310nm 0.31-0.35dB/km @1383nm 0.19-0.23dB/km @1550-1625nm	1260nm max.		18psec/km @1550nm 22psec/km @1625nm	1300-1324nm

Technical Information

Mechanical Characteristics

Cordage O.D.: 2.0mm +/- 0.1mm x
4.1mm +/- 0.2mm

Buffer Diameter: 900µm

Primary Coating : 245µm

Strength Member: Aramid Yarn

Jacket Material: LS0H IEC 61034-1 &
2, IEC-60332-1,
IEC-60754- 1 & 2

Minimum Bend Radius: Install: 3.0cm.

Long Term Bend Radius: 2.0cm

Operating Temperature: -40°C to
+85°C

Technical Information

the assembly instruction

Optical Characteristics

Optical Performance						
MM (1300nm)						
	FC	SC	LC	ST	E-2000	MTRJ
Insertion Loss	0.30	0.30	0.30	0.30	0.30	0.5
Return Loss	N/A	N/A	N/A	N/A	N/A	N/A
SM (1300 & 1550nm)						
	FC	SC	LC	ST	MTRJ	
Insertion Loss	0.30	0.30	0.30	0.30	0.50	
Return Loss	-50.0	-50.0	-50.0	-50.0	-30.0	
SM APC (1300 & 1550nm)						
	FC	SC	LC	ST	E-2000	
Insertion Loss	0.30	0.30	0.30	0.30	0.30	
Return Loss	-60.0	-60.0	-60.0	-60.0	-65.0	

Part No. Matrix - Substitute the correct code number or letter to determine

9 1 . X X . X X X . X X X X X

